

1.) Go to <http://www.kiatechinfo.com>.



2.) If you have an account enter your email or user id and password.

3.) Click "SIGN IN" button and proceed to Step 2.

4.) If you do not have an account, Click "SIGN UP" button and proceed to New 1.

Welcome

Enter your user id / email :

Verify your password :

[Forgot your password?](#)

Register for an account :

Contact Us

* For Dealer Access. Please [Click](#) here.

* **Note:** Some sections of this web site will require Adobe SVG Viewer, Adobe Acrobat Reader and Macromedia Flash Player. If these plugins are not installed on your computer please [Click](#) here.

System Requirements: Windows 98SE, ME, 2000, XP, 64MB RAM, 1024x768 video resolution, Internet Explorer 6, High-Speed (128K or greater) Internet connection, Full-Screen Mode (press F11 in Internet Explorer) is recommended for best viewing.

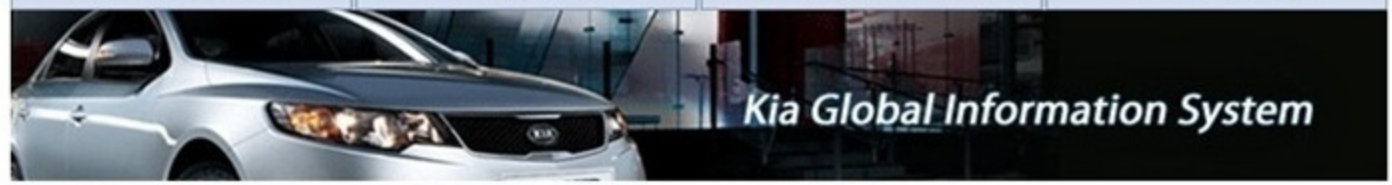


Step 1



User Information
Welcome!
LogOut

Service Materials Publication Diagnostic Tools Tools & Equipment



- Service Info (SI)
- Maint Schedule
- Owners Manual
- Locksmiths

Technical Service Bulletin

- 1/28/2011 [SORENTO(...)] Sorento (BL) Transfer Motor Assembly Replacement (TRA 0..
- 1/28/2011 [OPTIMA(TF)] 2011 Audio Unit Replacement / Bluetooth Version Change ..
- 1/26/2011 [BORREGO(...)] Smart Key Programming Procedures When Both Smart Keys A..
- 1/21/2011 [OPTIMA(TF)] Service Action: 2011MY Optima Audio Inspection (SA071) ..

Campaign

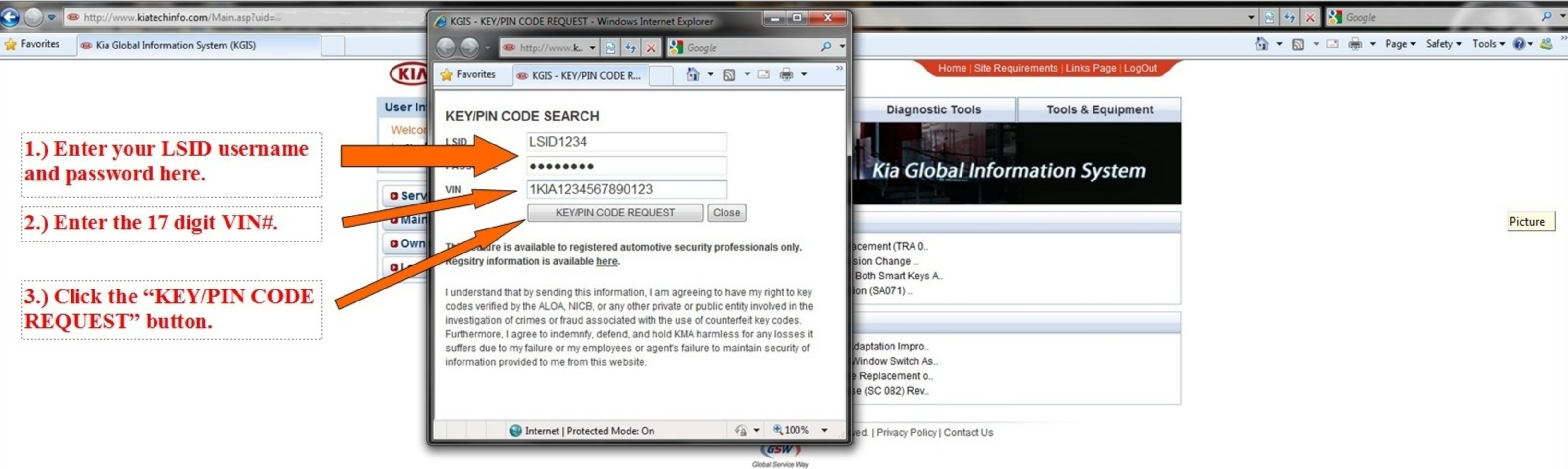
- 1/19/2011 [SPORTAGE...] Service Campaign: ECM Upgrade for Fuel Adaptation Impro..
- 11/30/2010 [SPORTAGE...] 2011MY Sportage LX Driver's Side Power Window Switch As..
- 11/24/2010 [SORENTO(...)] 2011 Sorento (XM) Inspection and Possible Replacement o..
- 10/27/2010 [SORENTO(...)] Service Campaign: Intermediate Shaft Noise (SC 082) Rev..



1.) Click on "Locksmiths" button, this will open a new window, make sure your pop-up blocker is disabled or allow this site for pop-ups.



Step 2



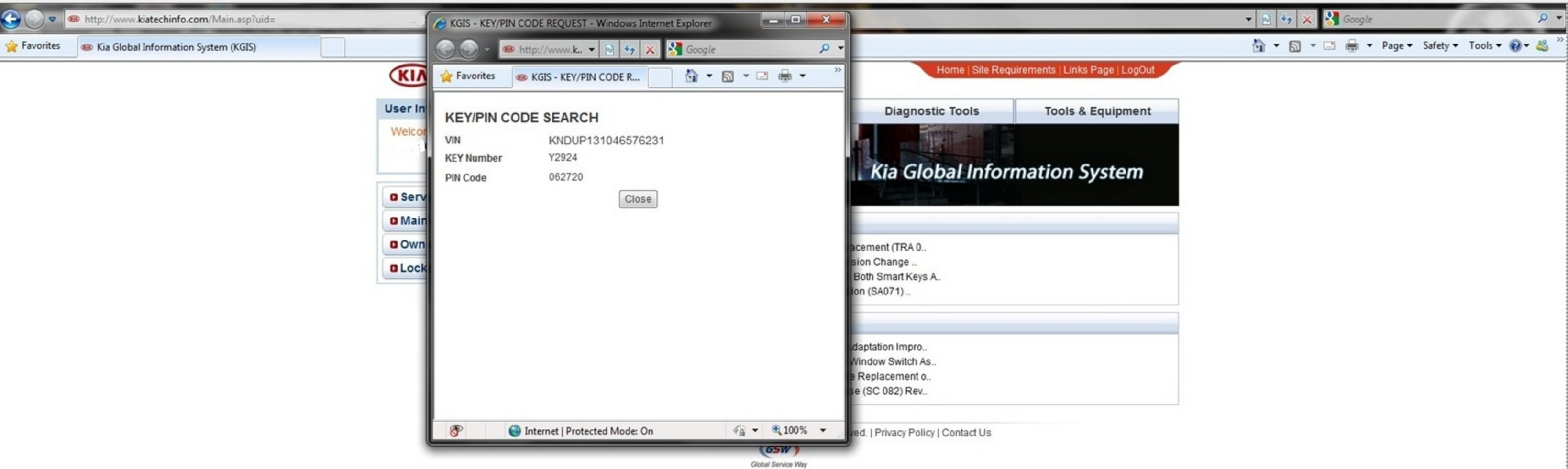
1.) Enter your LSID username and password here.

2.) Enter the 17 digit VIN#.

3.) Click the “KEY/PIN CODE REQUEST” button.

**** At this time there is no charge for KIA codes, there will be no payment screen. ****

Step 3



You are done.

Step 4



Create Account

All bold fields are required

User Name:

key1234

Email:

email@email.com

Organization Name:

Locksmith

Zip/Postal Code:

12345

Vehicle(s) I own:

- AMANTI(GH) [2004-200
- BORREGO(HM) [2009-
- FORTE/FORTE KOUP(
- OPTIMA(MG) [2006-20
- OPTIMA(MS) [2001-200
- OPTIMA(TF) [2011-201
- Overhaul-A4CF2 [2005
- Overhaul-A5CF2 [2010
- Overhaul-A5GF1 [2006
- Overhaul-A5MF1 [2005

[Kiatechinfo.com Privacy Policy and Usage Agreement Link](#)

Proceed with the above link? See NOTE below.

NOTE: If your computer has Windows XP operating system, you may have an automatic Pop-up Blocker running which can prevent these links from opening. To bypass the Pop-up Blocker, hold the "Ctrl" key (lower left corner of keyboard) while you click on the link, and do not release the "Ctrl" key until the download window fully appears.

Create Account

Cancel

Copyright © 2005-2011 Kia Motors America, Inc. All rights reserved. | Privacy Policy | Contact Us



New 1

1.) Create User Name, do not use your LSID username.

2.) Enter your email address here.

4.) Enter your business name

5.) Click on "Kiatechinfo.com Privacy Policy and Usage Agreement Link" link. Proceed to step New 2a.

6.) After you finish with steps New 2a and 2b, click the "Create Account" button.

3.) Enter your Zip Code here.

accuracy. Kia does not assume any responsibility for the accuracy, completeness or authenticity of any information contained in this site. This site, and all information and materials contained herein is provided to you "as is" without warranty of any kind.

7 A. Service Information and Procedures (Safety, Experience and Training)

The contents of this site are intended for service providers and other interested parties in the United States of America only. Kia cautions against applying any data on this website to models distributed outside of the US market. The documents contained herein do not include all of the necessary information regarding repair and service, and assume a certain level of prior experience and competency. This information is intended to provide the appropriate guidance and necessary specifications in the use by professional automobile technicians who have completed training and certifications, as well as access to special tools and equipment. In cases where inexperienced or uncertified technicians perform repair or service using only this information, or without proper equipment or tools, these instances may result in severe injury to the individual attempting to perform the repair or other individuals and could possibly cause damage to the customer's vehicle. In order to prevent potential danger or hazards and damages to a vehicle, be sure to follow all instructions within the information as well as all safety notices, cautions and warnings. Read all related materials completely and thoroughly before servicing the vehicle.

7 B. Service Information and Procedures (Tools & Equipment)

The service methods presented at this website are an effective method to perform service and repair of the vehicle. When performing operations following these procedures, use the appropriate tools and equipment as specified and recommended. Special Tools and Equipment recommended here are available for purchase through the contact information on this site for the Tool Supplier. If using non-specified or alternatives to the recommended tools and service methods, be sure to confirm your own personal safety practices and the safety of other technicians or bystanders to avoid the possibility of causing personal injury to you or others. Any variation to the recommended repair procedures presented at this site may compromise the original standards and specifications of the vehicle and will not guarantee continued performance and safety levels.

7 C. Service Information and Procedures (Parts Replacement)

When parts replacements are necessary, always use the same part number or the Kia recommended equivalent parts. Genuine Kia Parts are always recommended to ensure compliance with the specifications and standards of the original vehicle equipment.

7 D. Service Information and Procedures (Warnings, Cautions and Notices)

It is important to note that any "Warnings", "Cautions" or "Notices" must be carefully observed in order to reduce risk of personal injury during service or repair and to reduce the possibility of improper service or repair causing damage to the vehicle or rendering it unsafe. It is also important to understand that "Warnings", "Cautions" and "Notices" are not exhaustive because it is impossible to warn of all the possible hazardous consequences that might result from failure to follow the instructions contained herein.

7 E. Service Information and Procedures (Warrantable Service Responsibilities)

Some bulletins, announcements, procedures or content elements may make reference to Kia Warranty policy or practice - these policies or practices are only applicable to Kia dealers. Non-dealer service providers have the responsibility to notify their customers of warrantable service and may make no financial claims to Kia for performing warrantable service.

8. Copyright/Trademark Ownership

The information in this site is protected by copyright. You may only use the information, text or graphics contained on this site for your personal use and may not reproduce, adapt, or publish it, in whole or in part, for any purpose without the express written consent of Kia Motors America, Inc. The Kia name, logo and design are registered trademarks of Kia Motors Corporation of Korea. The Kia name, logo and design may not be used, downloaded, copied or distributed in any way.

1.) Read all the Privacy Policy then check the box "I Agree".

9. Cookies

A cookie is a small piece of information sent by a Web site that is stored on your hard disk by your computer's browser. It holds information a site may need to interact with you and personalize your experience. Software on the Kia web site uses cookies to provide users an interactive session and software for load management and database access. No personally identifiable information is contained in these cookies.

New 2b

10. Acceptance of Privacy Policy and Usage Agreement

Acceptance of Privacy Policy and Usage Agreement. By using this site, you signify your agreement to the terms of the Kia Website Privacy Policy and Usage Agreement as set forth in this and/or the most current update of this document. Kia reserves the right to change this Privacy Policy at any time. We will post those changes to this page so that you are aware of any changes. We will use, share, and disclose all personal and other user information in accordance with the Privacy Policy in effect at the time the information is collected. If you do not agree to any parts of this policy, please do not use this website. Your continued use of this site following changes to these terms will mean that you accept these changes.

I agree to the full extent of the Kiatechinfo.com Privacy Policy and Usage Agreement
(Click to check above box to confirm your agreement)

2.) Click the "Close" button, then it will bring you to step New 1.



Close



Create Account

Thank you for registering with Kia Global Information System.
You will receive an email with your username and password shortly

[Back to login page](#)



Copyright @ 2005-2011 Kia Motors America, Inc. All rights reserved. | [Privacy Policy](#) | [Contact Us](#)



1.) Now you should receive an email with your user name and password. Once you obtained this information, proceed to Step 1.

New 3